

Admission No: _____

Roll no. _____



BK BIRLA CENTRE FOR EDUCATION
SARALA BIRLA GROUP OF SCHOOLS
SENIOR SECONDARY CO-ED DAY CUM BOYS' RESIDENTIAL SCHOOL



MID-TERM (2024-25)

Environmental Studies

Marking Scheme

Invigilator Sign:

Duration: 2 Hrs

Examiner Sign:

Max. Marks: 40

Class : II

Marks Obtained

Date : 19.9.24

A. Fill in the blanks

1 x 4 = 4

1. Our ___lungs_____ help us to breathe
2. A small seed grows into a ___plant_____
3. Products made of milk are called ___dairy products_____
4. ___Cotton_____ clothes are worn in summer

B. Match the following

1 x 4 = 4

- | | |
|-----------------------------------|----------------|
| 5. National festival | Police |
| 6. Small number of family members | Pucca house |
| 7. Bungalow | Nuclear family |
| 8. Keep us safe | Republic day |

C. Identify these people and also write one sentence about them

2 x 2 = 4

9. A person who lays the bricks with cement

Mason. He helps in building the houses by laying bricks and cement.

10. Father of our Nation

Mahatma Gandhi. We got Independence from British with the help of him

D. Answer the following in brief

2 x 6 = 12

11. Why do we go to hospital?

We go to the hospital for problems that need immediate medical treatment

12. What are living things?

Living things are plants and animals that grow, eat and make waste.

13. Differentiate between vegetarian and non-vegetarian

Vegetarian do not eat meat and fish. Non vegetarian eat meat and fish

14. Why do we wear woollen clothes in winter?

Woollen clothes help us to protect our body by keeping warm.

15. Who comes under profession?

Chef, lawyer, Teachers, Doctors etc wear different uniforms are called professions.

16. What are internal organs?

Organs that are inside our body that we cannot see, they are called internal organs. Example: Lungs, heart, stomach

E. Answer the following questions

3 x 4 = 12

17. Name the different places in a neighbourhood and also mention its use.

Bank – We keep our money

Hospital – we go there when we are sick

Market – we go there to buy our useful things

18. Why do we celebrate harvest festivals?

The farmers express their joy and enjoyment by celebrating harvest festivals

19. Why is a pucca house stronger than a kuchcha house?

Pucca house is made up of bricks and cement and kuchcha house is made up of mud and wood. So pucca house are stronger than kuchcha house.

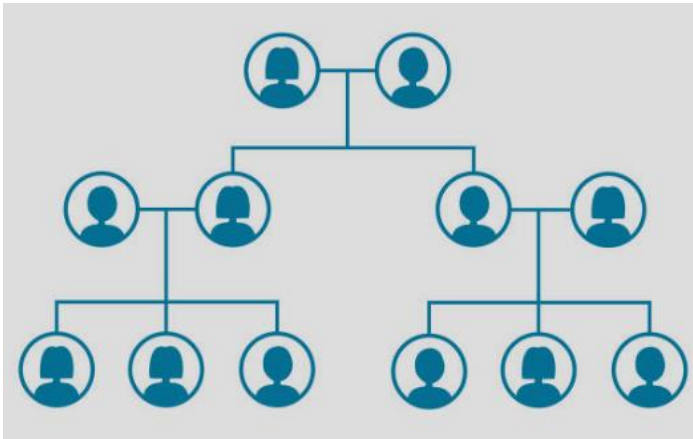
20. Differentiate between a nuclear family and joint family

Nuclear family is family of small members of only 4 or 3 people. Joint all live together including grandparent's uncle and aunt.

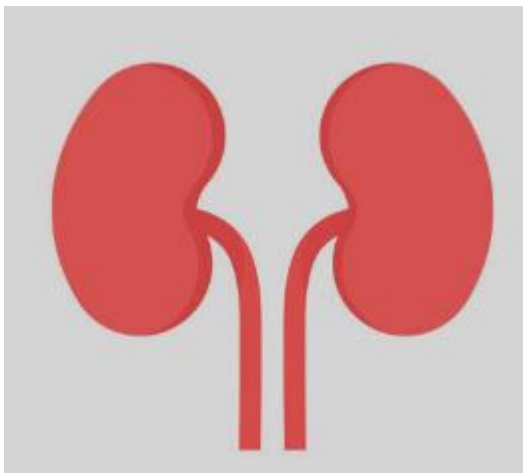
F. Draw the following and label

2 x 2 = 4

21. A Family Tree



22. Human Kidneys



End of the Paper